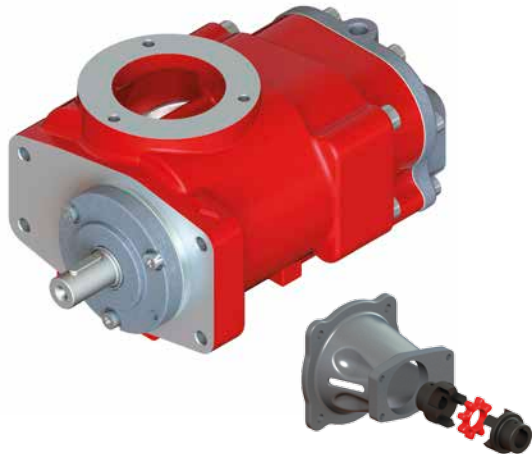


# OIL- INJECTED AIR-END V60

www.vmcitaly.com  
www.vmc-usa.com



## MAIN FEATURES:

**ROTOR PROFILE:** VMC has engineered its own rotor profile in order to reach maximum performance even in the most extreme conditions and guarantee efficiency and duration. This means higher air-flow rate for less energy consumption. **ROTOR ADJUSTMENT:** Threaded nuts are used to adjust rotors for a very fast and reliable maintenance. **BEARINGS:** Radial and thrust bearings have been engineered for generous reserve. Only first-quality bearings are used. **SHAFT SEAL:** An excellent reliability of shaft seal, thanks to the use of first-rate quality materials leads to no oil leakages. **VERSIONS available:** belt and gear-driven. **DIRECT DRIVEN:** Air-ends can be supplied with relative direct-driven kit (bell housing + spider couplings).

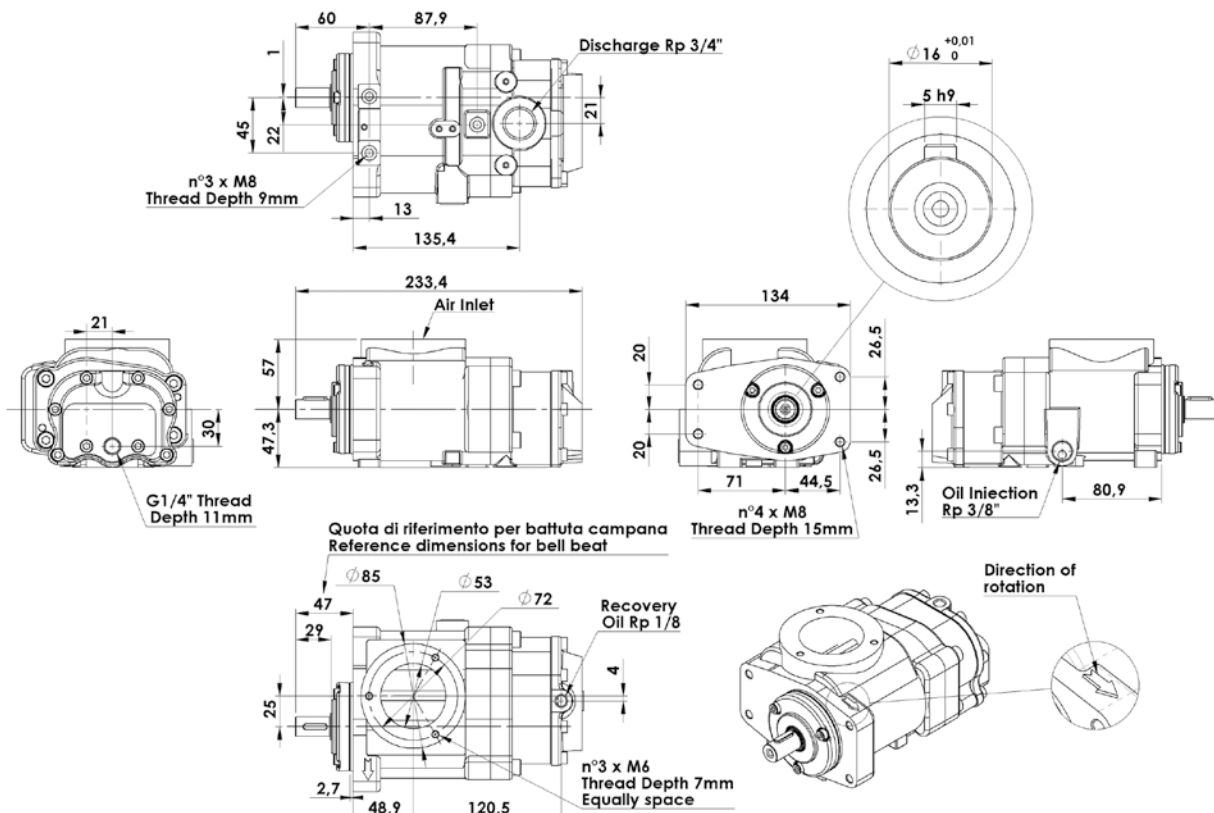
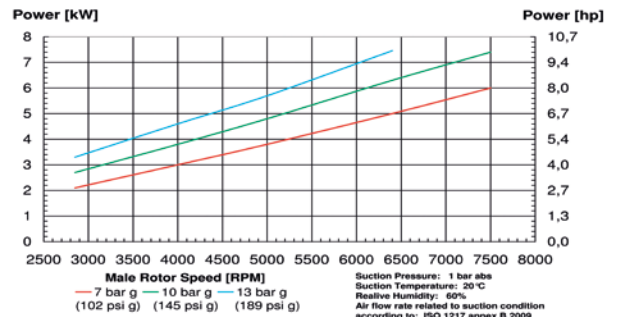
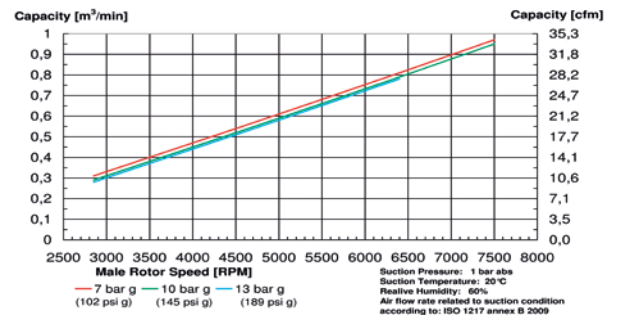
**SPECIAL APPLICATION:** Air-end are also available for Natural Gas applications.

## MAINTENANCE:

The wear-and-tear of air-end components depends on compressor applications and operating parameters. Air-end inspection and ordinary maintenance are recommended using VMC's original spare parts kits whose instructions are indicated in the maintenance and trouble-shooting document.

TECHNICAL DATA		V60	V60G
Outside male diameter:	mm - inch	59.7 - 2,35	
Outside female diameter:	mm - inch	47.7 - 1,88	
L/D:		1,55	
Air Capacity (ISO 1217 ANNEX B 2009)	m <sup>3</sup> /min	0,28 - 0,97	
	cfm	10 - 34	
Max Working Pressure	bar g - psi g	13 - 189	
Min Working Pressure	bar g - psi g	5 - 73	
Oil injected Quantity	L/min	11 - 15	
	gal/min (US)	2,9 - 4	
Max Input Power	kW	7,5	
	hp	10	
Max main rotor speed	rpm	7500	
Max outlet air/oil Temperature	°C - °F	105 - 221	
Weight	kg - lb	8.9 - 20	11 - 24,2

Air flow rate related to suction condition according to ISO 1217 Annex B 2009: relative humidity=60%; suction press. (abs)=1 bar; suction temp.=20°C; disch. temp.=80°C



Pack Smart V60



Pack Smart V61G



Pack Smart V60D

### MAIN FEATURES:

**AIR-END:** Top-quality components and cutting-edge technology ensure reliability and long-lasting performance. Available in belt and gear-driven versions. **INTAKE VALVE:** Different working systems available: E (on-off), PM (totally pneumatic), P (hybrid) and NR (only with a check valve). **COMBINATION BLOCK SYSTEM:** It includes a **thermostatic** and **minimum** pressure valve, supports for **spin-on separators** and oil filters, a relative wide range of nipples. Thermostatic units available at different working temperatures. **OIL RECOVERY VIEWER:** Equipped with a check valve and calibrated nozzle. **SAFETY VALVE:** CE certified, available for different working pressures. **TANK SEPARATOR:** Tested and certified for working pressures up to 15 bars. Equipped with filling plug, drainage tap and oil level viewer. Different certifications (CE, ASME, etc.) provided upon request. **FILTERS:** air, oil and separator filters supplied separately on demand. **DIRECT DRIVEN:** Pack Smart can be supplied with relative direct-driven kit (bell housing + spider couplings).

**SPECIAL APPLICATION:** PackSmart are also available for Natural Gas applications.

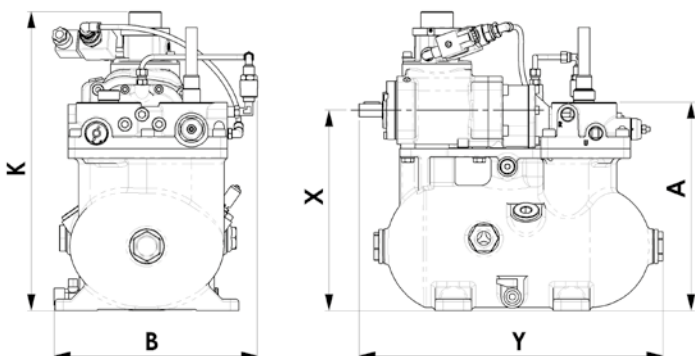
### MAINTENANCE:

The wear-and-tear of the Integrated and PackSmart systems depends on compressor applications and operating parameters. Their inspection and ordinary maintenance are recommended using VMC's original spare parts kits whose instructions indicated in the maintenance and troubleshooting document.

TECHNICAL DATA		PackSmart V60D	PackSmart V60B	PackSmart V61B	PackSmart V61G
Power	kW	from 2,2 to 3	from 4 to 7,5		
	hp	from 3 to 4	from 5,5 to 10		
Air Capacity (ISO 1217 ANNEX B 2009)	m <sup>3</sup> /min	see diagram of V60			
Working Pressure	bar	see diagram of V60			
Oil Flow Rate	L/min	12.5 max	15 max		
	gal/min (US)	3,3 max	4 max		
Oil Inlet/Outlet	inch	3/8" Gas	3/8" Gas		
Air outlet (From MPV)	inch	1/2" Gas	1/2" Gas		
Oil nipples Size	inch	3/4"-16 UNF or 3/4"GAS or 1"-12 UNF			
Air nipples Size	mm	M22 x 1.5 or M24 x 1.5			
Thermostat Temperature Setting available	°C	55-70 or 71-85 or 83-95			
	°F	131-158 or 159,8-185 or 181,4-203			
Materials	Unit is made in anodized aluminium alloy, steel and cast iron. Inside parts in aluminium alloy, steel, brass and FPM/FKM sealing.				
Dimension		PackSmart V60D	PackSmart V60B	PackSmart V61B	PackSmart V61G
Weight	kg - lb	19 - 42	31 - 68	16.5 - 36,4	19 - 42
Y	mm - inch	424 - 16,7	369 - 14,52	364 - 14,3	416 - 16,4
X	mm - inch	213 - 8,38	246 - 9,68	243.5 - 9,6	
K	mm - inch	330 - 12,99	368 - 14,48	350 - 13,8	
B	mm - inch	270 - 10,62	254 - 10	260 - 10,2	
A	mm - inch	223 - 8,77	256 - 10,07	263 - 10,3	

Attention: The drawing below is not suitable for all models. Please log on to our website for specific drawings.

Pack Smart V60



Pack Smart V61G

