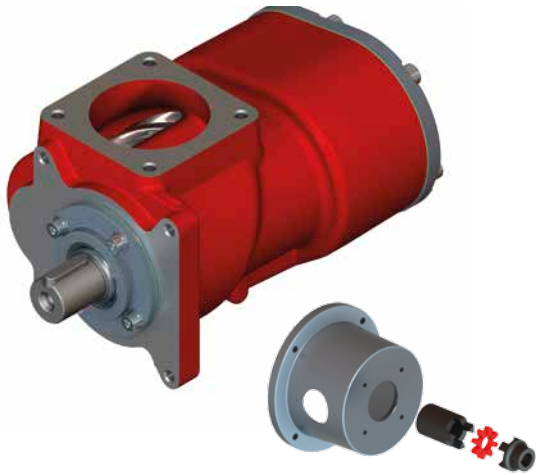


OIL- INJECTED AIR-END V75

www.vmcitaly.com
www.vmc-usa.com



MAIN FEATURES:

ROTOR PROFILE: VMC has engineered its own rotor profile in order to reach maximum performance even in the most extreme conditions and guarantee efficiency and duration. This means higher air-flow rate for less energy consumption. **ROTOR Adjustment:** Threaded nuts are used to adjust rotors for a very fast and reliable maintenance. **BEARINGS:** Radial and thrust bearings have been engineered for generous reserve. Only first-quality bearings are used. **SHAFT SEAL:** An excellent reliability of shaft seal, thanks to the use of first-rate quality materials leads to no oil leakages. **VERSIONS available:** belt and gear-driven. **DIRECT DRIVEN:** Air-ends can be supplied with relative direct-driven kit (bell housing + spider couplings).

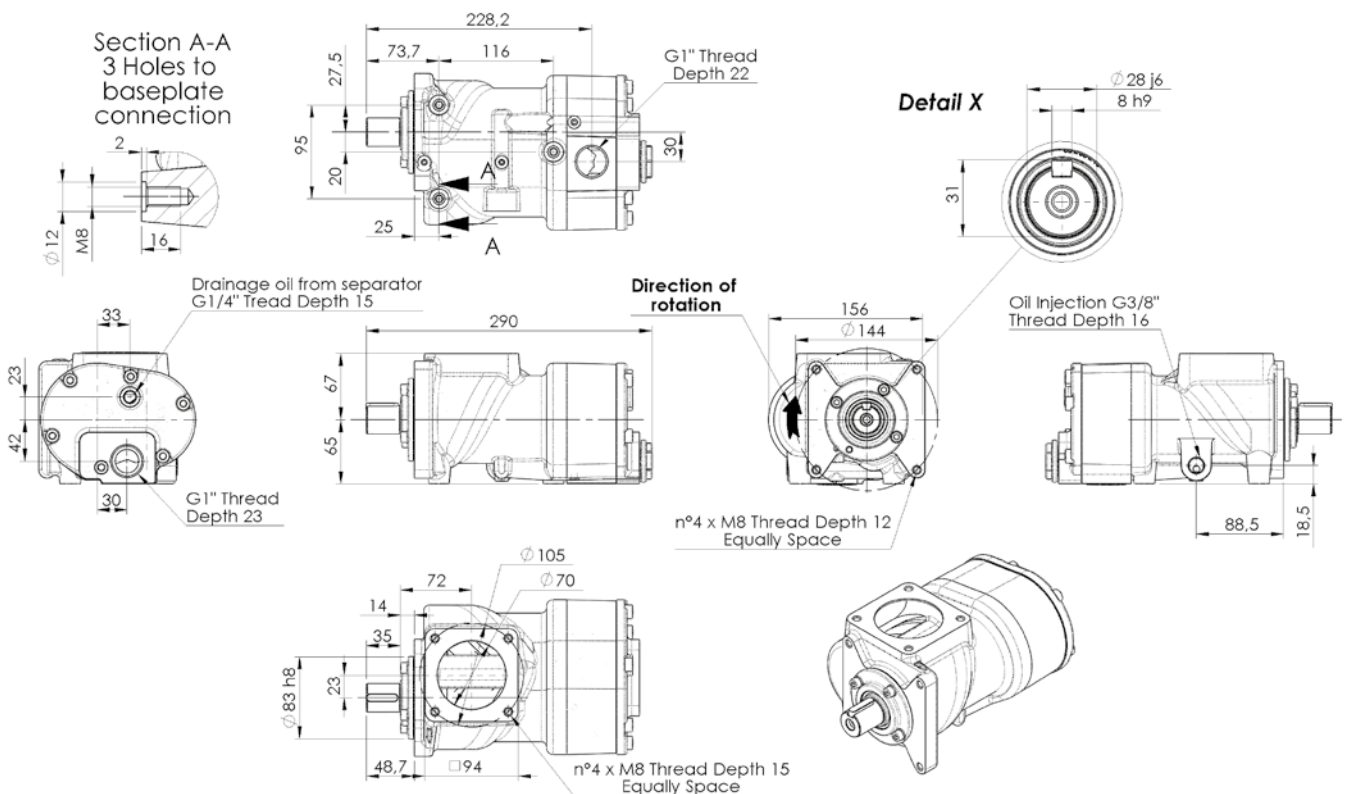
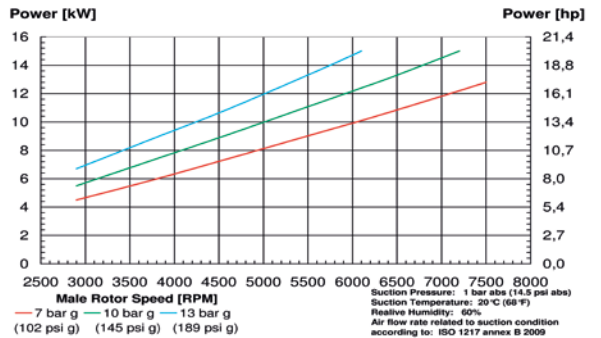
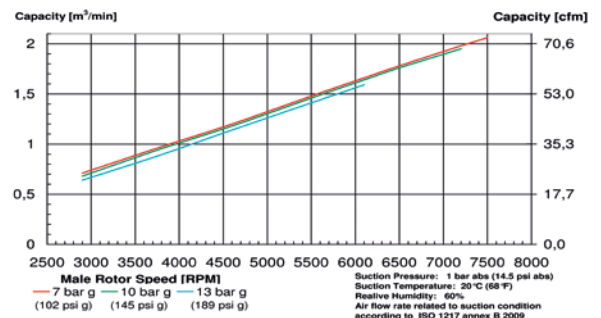
SPECIAL APPLICATION: Air-end are also available for Natural Gas applications.

MAINTENANCE:

The wear-and-tear of air-end components depends on compressor applications and operating parameters. Air-end inspection and ordinary maintenance are recommended using VMC's original spare parts kits whose instructions are indicated in the maintenance and trouble-shooting document.

| TECHNICAL DATA | | V75 | V75G |
|---|---------------------|-------------|---------|
| Outside male diameter: | mm - inch | 73.4 - 2.88 | |
| Outside female diameter: | mm - inch | 56.6 - 2.22 | |
| L/D: | | 1,65 | |
| Air Capacity (ISO 1217 ANNEX B 2009) | m ³ /min | 0,65 - 2,1 | |
| | cfm | 23 - 74 | |
| Max Working Pressure | bar g - psi g | 13 - 189 | |
| Min Working Pressure | bar g - psi g | 5 - 73 | |
| Oil injected Quantity | L/min | 20-28 | |
| | gal/min (US) | 5,3 - 7,4 | |
| Max Input Power | kW | 15 | |
| | hp | 20 | |
| Max main rotor speed | rpm | 7500 | |
| Max outlet air/oil Temperature | °C - °F | 105 - 221 | |
| Weight | kg - lb | 16 - 35 | 23 - 51 |

Air flow rate related to suction condition according to ISO 1217 Annex B 2009: relative humidity=60%; suction press. (abs)=1 bar; suction temp.=20°C; disch. temp.=80°C



PACK SMART V75

PACK SMART V76G

www.vmcitaly.com
www.vmc-usa.com



Pack Smart V75

Pack Smart V76G

MAIN FEATURES:

ROTOR PROFILE: VMC has engineered its own rotor profile in order to reach maximum performance even in the most extreme conditions and guarantee efficiency and duration. This means higher air-flow rate for less energy consumption. ROTOR Adjustment: Threaded nuts are used to adjust rotors for a very fast and reliable maintenance. BEARINGS: Radial and thrust bearings have been engineered for generous reserve. Only first-quality bearings are used. SHAFT SEAL: An excellent reliability of shaft seal, thanks to the use of first-rate quality materials leads to no oil leakages. VERSIONS available: belt and gear-driven. DIRECT DRIVEN: Air-ends can be supplied with relative direct-driven kit (bell housing + spider couplings).

SPECIAL APPLICATION: PackSmart are also available for Natural Gas applications.

MAINTENANCE:

The wear-and-tear of air-end components depends on compressor applications and operating parameters. Air-end inspection and ordinary maintenance are recommended using VMC's original spare parts kits whose instructions are indicated in the maintenance and trouble-shooting document.



Pack Smart V75D

| TECHNICAL DATA | | For performances data see V75 technical data | | |
|--|-----------|---|----------------|-----------------|
| Oil Inlet/Outlet | inch | 3/8" Gas | | |
| Air Outlet (From MPV) | inch | 1/2" Gas | | |
| Oil nipples Size | inch | 3/4"-16 UNF or 3/4"GAS or 1"-12 UNF | | |
| Air nipples Size | mm | M22 x 1.5 or M24 x 1.5 | | |
| Thermostat Temperature Setting available | °C | 55-70 or 71-85 or 83-95 | | |
| | °F | 131-158 or 159,8-185 or 181,4-203 | | |
| Materials | | Unit is made in anodized aluminium alloy, steel and cast iron. Inside parts in aluminium alloy, steel, brass and FPM/FKM sealing. | | |
| Dimension | | Pack Smart V75 | Pack Smart V76 | Pack Smart V76G |
| Weight | kg - lb | 53 - 111 | 46 - 101,4 | 53 - 111 |
| Y | mm - inch | 442 - 17,4 | 434 - 17,1 | 522 - 2,5 |
| X | mm - inch | 345 - 13,6 | 297 - 11,7 | |
| K | mm - inch | 492 - 19,4 | 444 - 17,5 | |
| B | mm - inch | 270 - 10,6 | 318 - 12,5 | |
| A | mm - inch | 337 - 13,3 | 316 - 12,4 | |

Attention: The drawing below is not suitable for all models. Please log on to our website for specific drawings.

Pack Smart V75

Pack Smart V76G

